
























Worklist: 1350

<u>LAB_CASE</u>	<u>ITEM</u>	<u>TASK_ID</u>	<u>DESCRIPTION</u>	
C2016-0887	1.2	68904	AM 14 Blood Cannabinoids by	
C2016-0923	1	68943	AM 14 Blood Cannabinoids by	
C2016-1111	1	68944	AM 14 Blood Cannabinoids by	
M2016-1853	2	68951	AM 14 Blood Cannabinoids by	
M2016-2037	1.1	68895	AM 14 Blood Cannabinoids by	
M2016-2070	2.1	67431	AM 14 Blood Cannabinoids by	
M2016-2098	2.1	68905	AM 14 Blood Cannabinoids by	
M2016-2204	2.1	68893	AM 14 Blood Cannabinoids by	
M2016-2561	1.1	68902	AM 14 Blood Cannabinoids by	
P2016-0902	1	68950	AM 14 Blood Cannabinoids by	
P2016-1183	1.1	68906	AM 14 Blood Cannabinoids by	
P2016-1209	1.1	68892	AM 14 Blood Cannabinoids by	
P2016-1210	1.1	67434	AM 14 Blood Cannabinoids by	
P2016-1214	1.1	67435	AM 14 Blood Cannabinoids by	
P2016-1262	1.1	68903	AM 14 Blood Cannabinoids by	
P2016-1301	1.1	67436	AM 14 Blood Cannabinoids by	
P2016-1301	1.2	68888	AM 14 Blood Cannabinoids by	
P2016-1302	1.1	68896	AM 14 Blood Cannabinoids by	
P2016-1327	1.1	68889	AM 14 Blood Cannabinoids by	
P2016-1331	1.1	68897	AM 14 Blood Cannabinoids by	
P2016-1364	1.1	68898	AM 14 Blood Cannabinoids by	
P2016-1373	1.1	68899	AM 14 Blood Cannabinoids by	
P2016-1374	2.1	68900	AM 14 Blood Cannabinoids by	

Worklist: 1350

<u>LAB CASE</u>	<u>ITEM</u>	<u>TASK ID</u>	<u>DESCRIPTION</u>	
P2016-1380	1.1	68901	AM 14 Blood Cannabinoids by	
P2016-1414	1.1	68907	AM 14 Blood Cannabinoids by	
P2016-1510	1.1	68908	AM 14 Blood Cannabinoids by	
P2016-1545	1	68945	AM 14 Blood Cannabinoids by	
P2016-1549	1.2	68909	AM 14 Blood Cannabinoids by	
P2016-1563	1.1	68910	AM 14 Blood Cannabinoids by	
P2016-1591	1	68946	AM 14 Blood Cannabinoids by	
P2016-1607	1	68947	AM 14 Blood Cannabinoids by	
P2016-1649	1	68948	AM 14 Blood Cannabinoids by	
P2016-1710	1	68949	AM 14 Blood Cannabinoids by	



Worklist Report

Worklist Path:	C:\MassHunter\ISP Methods\worklists\Cann 111716 CS.wkl
Date Modified:	11/17/2016 03:45:51 PM
Date Printed:	11/22/2016 01:40:46 PM

Worklist Run Parameters

Operator Name:	62340
Run Type:	Standard Start
Part of Method to Run:	Acquisition Only
Execution for Acquisition-DA:	Synchronous
Acquisition Method Path:	C:\MassHunter\ISP Methods\Acquisition
DA Method Path:	D:\MassHunter\methods
Data File Path:	C:\MassHunter\Data\2016\CANN\111716 CANN CS
Pre-Worklist Script:	---
Post-Worklist Script:	SCP_InstrumentStandby(){MH_Acq_Scripts.exe}
Acquisition Clean Up Script:	---
Overlapped Injection:	No
Clear sample selection after run:	Yes
Wait Time for Ready(Min):	10
Threshold Disk Value(GB):	10
Comment:	---

Plate Barcode Information

Plate	Barcode
P1	
P2	

Worklist Table

Sample Position	Sample Name	Method	Data File	Sample Type	Level Name	Comment	Info.
P2-A1	Blank	isp blood cannabinoids Poky 2016-2.m	Blank1-r001.d	Blank		AM 6.1.2 Cannabinoids by LCQQQ	
P2-A1	Blank	isp blood cannabinoids Poky 2016-2.m	Blank2-r001.d	Blank		AM 6.1.2 Cannabinoids by LCQQQ	
P2-A2	Blood: 1_5 ng/mL	isp blood cannabinoids Poky 2016-2.m	B_CAL1-r001.d	Calibration	1	AM 6.1.2 Cannabinoids by LCQQQ	c-THC @5ng/mL, all others @1 ng/mL
P2-A3	Blood: 2_10 ng/mL	isp blood cannabinoids Poky 2016-2.m	B_CAL2_r001.d	Calibration	2	AM 6.1.2 Cannabinoids by LCQQQ	c-THC @10ng/mL, all others @2 ng/mL
P2-A4			B_CAL3_r001.d	Calibration	3		

Sample Position	Sample Name	Method	Data File	Sample Type	Level Name	Comment	Info.
	Blood: 5_25 ngmL	isp blood cannabinoids Poky 2016-2.m				AM 6.1.2 Cannabinoids by LCQQQ	c-THC @25ng/mL, all others @5 ng/mL
P2-A5	Blood: 10_50 ngmL	isp blood cannabinoids Poky 2016-2.m	B_CAL4_r001.d	Calibration	4	AM 6.1.2 Cannabinoids by LCQQQ	c-THC @50ng/mL, all others @10 ng/mL
P2-A6	Blood: 25_125 ngmL	isp blood cannabinoids Poky 2016-2.m	B_CAL5_r001.d	Calibration	5	AM 6.1.2 Cannabinoids by LCQQQ	c-THC @125ng/mL, all others @25 ng/mL
P2-A7	Blood: 50_250 ngmL	isp blood cannabinoids Poky 2016-2.m	B_CAL6_r001.d	Calibration	6	AM 6.1.2 Cannabinoids by LCQQQ	c-THC @250ng/mL, all others @50 ng/mL
P2-A8	Blood: 100_500 ngmL	isp blood cannabinoids Poky 2016-2.m	B_CAL7_r001.d	Calibration	7	AM 6.1.2 Cannabinoids by LCQQQ	c-THC @500ng/mL, all others @100 ng/mL
P2-A1	Blank	isp blood cannabinoids Poky 2016-2.m	Carryover blank1_r001.d	Blank		AM 6.1.2 Cannabinoids by LCQQQ	
P2-A9	Blood Negative Control	isp blood cannabinoids Poky 2016-2.m	B-NC-r001.d	Sample		AM 6.1.2 Cannabinoids by LCQQQ	Negative Blood UTAK Lot B1013
P2-B1	Blood PC 1	isp blood cannabinoids Poky 2016-2.m	B-POS Ctrl 1-r001.d	Sample		AM 6.1.2 Cannabinoids by LCQQQ	Positive Control-UTAK B1013 + WS060716
P2-A1	Blank	isp blood cannabinoids Poky 2016-2.m	Carryover blank2_r001.d	Blank		AM 6.1.2 Cannabinoids by LCQQQ	
P2-A9	Blank C2016-0887-1.2	isp blood cannabinoids Poky 2016-2.m	C2016-0887-1.21_BLK_r001.d	Blank		AM 6.1.2 Cannabinoids by LCQQQ	
P2-B2	C2016-0887-1.2	isp blood cannabinoids Poky 2016-2.m	C2016-0887-1.2-r001.d	Sample		AM 6.1.2 Cannabinoids by LCQQQ	Blood
P2-A9	Blank C2016-0923-1	isp blood cannabinoids Poky 2016-2.m	C2016-0923-1_BLK_r001.d	Blank		AM 6.1.2 Cannabinoids by LCQQQ	
P2-B4	C2016-0923-1	isp blood cannabinoids Poky 2016-2.m	C2016-0923-1-r001.d	Sample		AM 6.1.2 Cannabinoids by LCQQQ	Blood
P2-A9	Blank C2016-1111-1	isp blood cannabinoids Poky 2016-2.m	C2016-1111-1_BLK_r001.d	Blank		AM 6.1.2 Cannabinoids by LCQQQ	

Sample Position	Sample Name	Method	Data File	Sample Type	Level Name	Comment	Info.
P2-C3	P2016-0902-1	isp blood cannabinoids Poky 2016-2.m	P2016-0902-1-r001.d	Sample		AM 6.1.2 Cannabinoids by LCQQQ	Blood
P2-A9	Blank P2016-1183-1.1	isp blood cannabinoids Poky 2016-2.m	P2016-1183-1.1_BLK_r001.d	Blank		AM 6.1.2 Cannabinoids by LCQQQ	
P2-C4	P2016-1183-1.1	isp blood cannabinoids Poky 2016-2.m	P2016-1183-1.1-r001.d	Sample		AM 6.1.2 Cannabinoids by LCQQQ	Blood
P2-A9	Blank P2016-1209-1.1	isp blood cannabinoids Poky 2016-2.m	P2016-1209-1.1_BLK_r001.d	Blank		AM 6.1.2 Cannabinoids by LCQQQ	
P2-C5	P2016-1209-1.1	isp blood cannabinoids Poky 2016-2.m	P2016-1209-1.1-r001.d	Sample		AM 6.1.2 Cannabinoids by LCQQQ	Blood
P2-A9	Blank P2016-1210-1.1	isp blood cannabinoids Poky 2016-2.m	P2016-1210-1.1_BLK_r001.d	Blank		AM 6.1.2 Cannabinoids by LCQQQ	
P2-C6	P2016-1210-1.1	isp blood cannabinoids Poky 2016-2.m	P2016-1210-1.1-r001.d	Sample		AM 6.1.2 Cannabinoids by LCQQQ	Blood
P2-A9	Blank P2016-1214-1.1	isp blood cannabinoids Poky 2016-2.m	P2016-1214-1.1_BLK_r001.d	Blank		AM 6.1.2 Cannabinoids by LCQQQ	
P2-C7	P2016-1214-1.1	isp blood cannabinoids Poky 2016-2.m	P2016-1214-1.1-r001.d	Sample		AM 6.1.2 Cannabinoids by LCQQQ	Blood
P2-A9	Blank P2016-1262-1.1	isp blood cannabinoids Poky 2016-2.m	P2016-1262-1.1_BLK_r001.d	Blank		AM 6.1.2 Cannabinoids by LCQQQ	
P2-C8	P2016-1262-1.1	isp blood cannabinoids Poky 2016-2.m	P2016-1262-1.1-r001.d	Sample		AM 6.1.2 Cannabinoids by LCQQQ	Blood
P2-A9	Blank P2016-1301-1.1	isp blood cannabinoids Poky 2016-2.m	P2016-1301-1.1_BLK_r001.d	Blank		AM 6.1.2 Cannabinoids by LCQQQ	
P2-C9	P2016-1301-1.1	isp blood cannabinoids Poky 2016-2.m	P2016-1301-1.1-r001.d	Sample		AM 6.1.2 Cannabinoids by LCQQQ	Blood
P2-A9	Blank P2016-1302-1.1	isp blood cannabinoids Poky 2016-2.m	P2016-1302-1.1_BLK_r001.d	Blank		AM 6.1.2 Cannabinoids by LCQQQ	

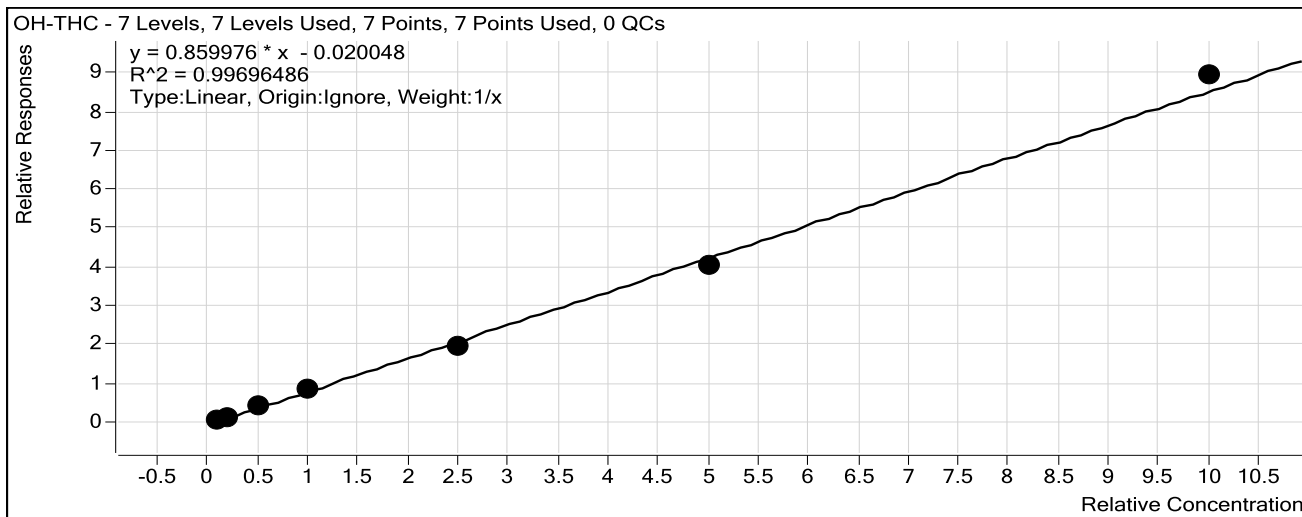
Sample Position	Sample Name	Method	Data File	Sample Type	Level Name	Comment	Info.
P2-E6	P2016-1607-1	isp blood cannabinoids Poky 2016-2.m	P2016-1607-1-r001.d	Sample		AM 6.1.2 Cannabinoids by LCQQQ	Blood
P2-F5	Blank P2016-1649-1	isp blood cannabinoids Poky 2016-2.m	P2016-1649-1_BLK_r001.d	Blank		AM 6.1.2 Cannabinoids by LCQQQ	
P2-E7	P2016-1649-1	isp blood cannabinoids Poky 2016-2.m	P2016-1649-1-r001.d	Sample		AM 6.1.2 Cannabinoids by LCQQQ	Blood
P2-F5	Blank P2016-1710-1	isp blood cannabinoids Poky 2016-2.m	P2016-1710-1_BLK_r001.d	Blank		AM 6.1.2 Cannabinoids by LCQQQ	
P2-E8	P2016-1710-1	isp blood cannabinoids Poky 2016-2.m	P2016-1710-1-r001.d	Sample		AM 6.1.2 Cannabinoids by LCQQQ	Blood
P2-A1	Blank	isp blood cannabinoids Poky 2016-2.m	Blank3-r001.d	Blank		AM 6.1.2 Cannabinoids by LCQQQ	Blood

ISP Forensics Calibration Curve Report

CS

Batch Data Path C:\MassHunter\Data\2016\CANN\111716 CANN CS\QuantResults\11-17-2016 Cannabinoids.batch.bin
Last Calib Update 11/21/2016 3:04 PM **Analyst Name** ISP TOX

Target Compound OH-THC
Internal Standard OH-THC-d3



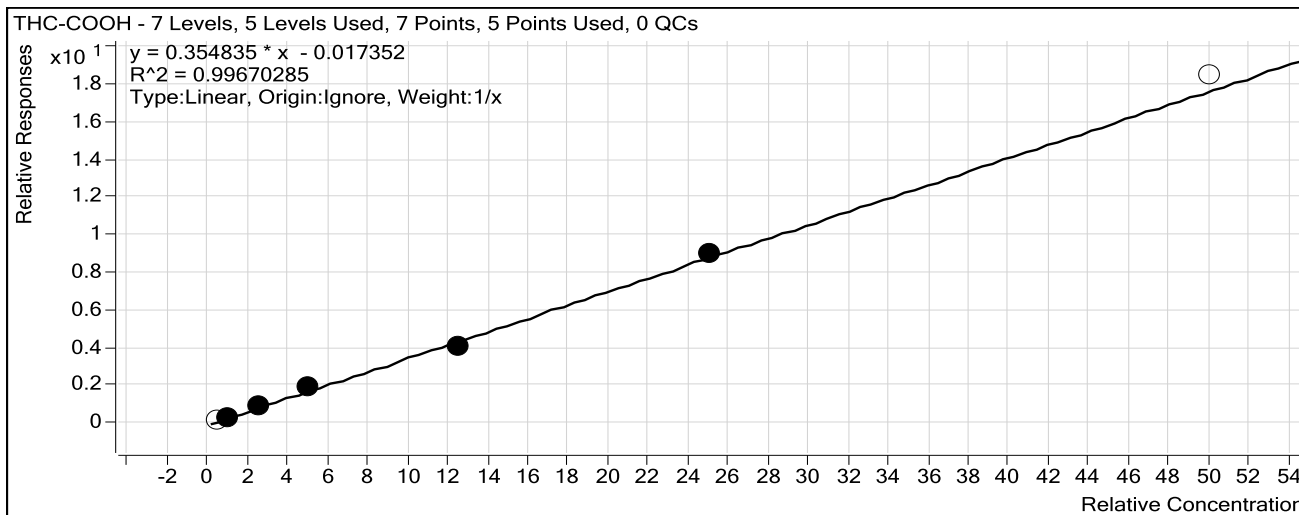
Sample	Level	Enabled	Exp Conc	Final Conc	Accuracy
Blood: 1_5 ng/mL	1	<input checked="" type="checkbox"/>	1	1.2	115.5
Blood: 2_10 ng/mL	2	<input checked="" type="checkbox"/>	2	1.8	91.7
Blood: 5_25 ng/mL	3	<input checked="" type="checkbox"/>	5	4.8	96.6
Blood: 10_50 ng/mL	4	<input checked="" type="checkbox"/>	10	10.5	104.7
Blood: 25_125 ng/mL	5	<input checked="" type="checkbox"/>	25	23.1	92.5
Blood: 50_250 ng/mL	6	<input checked="" type="checkbox"/>	50	47.5	94.9
Blood: 100_500 ng/mL	7	<input checked="" type="checkbox"/>	100	104.1	104.1

ISP Forensics Calibration Curve Report

Batch Data Path C:\MassHunter\Data\2016\CANN\111716 CANN CS\QuantResults\11-17-2016
Cannabinoids.batch.bin

Last Calib Update 11/21/2016 3:04 PM **Analyst Name** ISP TOX

Target Compound *THC-COOH*
Internal Standard *THC-COOH-d3*



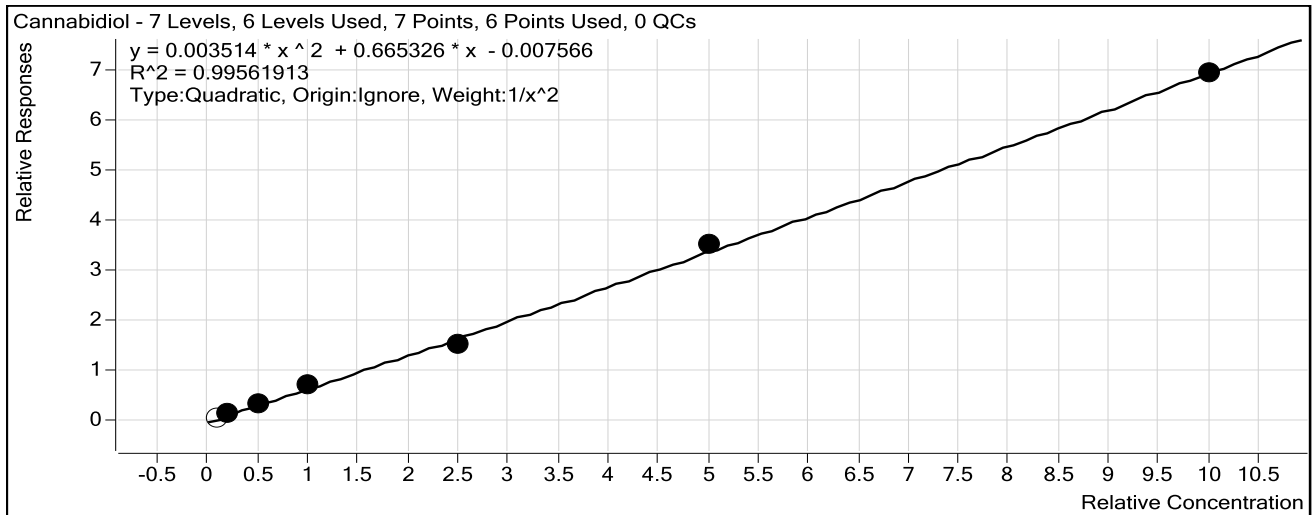
Sample	Level	Enabled	Exp Conc	Final Conc	Accuracy
Blood: 1_5 ng/mL	1	<input type="checkbox"/>	5	6.0	120.9
Blood: 2_10 ng/mL	2	<input checked="" type="checkbox"/>	10	9.3	92.9
Blood: 5_25 ng/mL	3	<input checked="" type="checkbox"/>	25	26.5	105.9
Blood: 10_50 ng/mL	4	<input checked="" type="checkbox"/>	50	53.1	106.2
Blood: 25_125 ng/mL	5	<input checked="" type="checkbox"/>	125	116.2	93.0
Blood: 50_250 ng/mL	6	<input checked="" type="checkbox"/>	250	254.9	102.0
Blood: 100_500 ng/mL	7	<input type="checkbox"/>	500	520.6	104.1

ISP Forensics Calibration Curve Report

CS

Batch Data Path C:\MassHunter\Data\2016\CANN\111716 CANN CS\QuantResults\11-17-2016 Cannabinoids.batch.bin
Last Calib Update 11/21/2016 3:04 PM **Analyst Name** ISP TOX

Target Compound *Cannabidiol*
Internal Standard *Cannabidiol-d3*



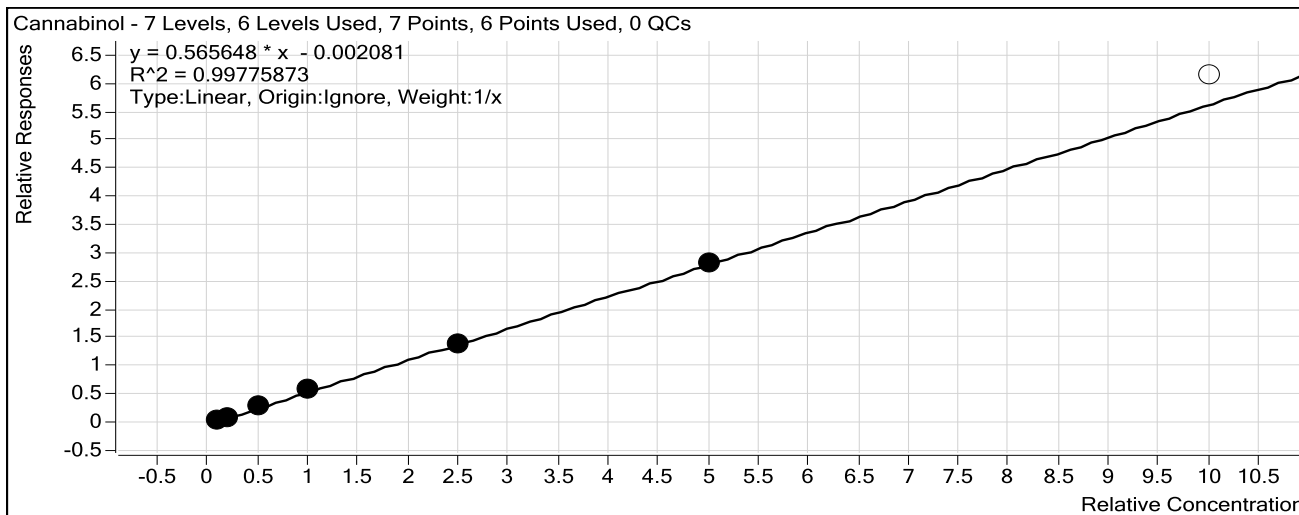
Sample	Level	Enabled	Exp Conc	Final Conc	Accuracy
Blood: 1_5 ng/mL	1	<input type="checkbox"/>	1	1.1	105.2
Blood: 2_10 ng/mL	2	<input checked="" type="checkbox"/>	2	2.0	100.5
Blood: 5_25 ng/mL	3	<input checked="" type="checkbox"/>	5	4.8	96.0
Blood: 10_50 ng/mL	4	<input checked="" type="checkbox"/>	10	10.8	107.9
Blood: 25_125 ng/mL	5	<input checked="" type="checkbox"/>	25	23.1	92.2
Blood: 50_250 ng/mL	6	<input checked="" type="checkbox"/>	50	52.0	104.0
Blood: 100_500 ng/mL	7	<input checked="" type="checkbox"/>	100	99.3	99.3

ISP Forensics Calibration Curve Report

Batch Data Path C:\MassHunter\Data\2016\CANN\111716 CANN CS\QuantResults\11-17-2016
Cannabinoids.batch.bin

Last Calib Update 11/21/2016 3:04 PM **Analyst Name** ISP TOX

Target Compound *Cannabinol*
Internal Standard *Cannabinol-d3*



Sample	Level	Enabled	Exp Conc	Final Conc	Accuracy
Blood: 1_5 ng/mL	1	<input checked="" type="checkbox"/>	1	1.1	106.5
Blood: 2_10 ng/mL	2	<input checked="" type="checkbox"/>	2	1.6	81.5
Blood: 5_25 ng/mL	3	<input checked="" type="checkbox"/>	5	5.5	110.3
Blood: 10_50 ng/mL	4	<input checked="" type="checkbox"/>	10	10.4	104.5
Blood: 25_125 ng/mL	5	<input checked="" type="checkbox"/>	25	24.3	97.2
Blood: 50_250 ng/mL	6	<input checked="" type="checkbox"/>	50	50.0	100.1
Blood: 100_500 ng/mL	7	<input type="checkbox"/>	100	108.6	108.6

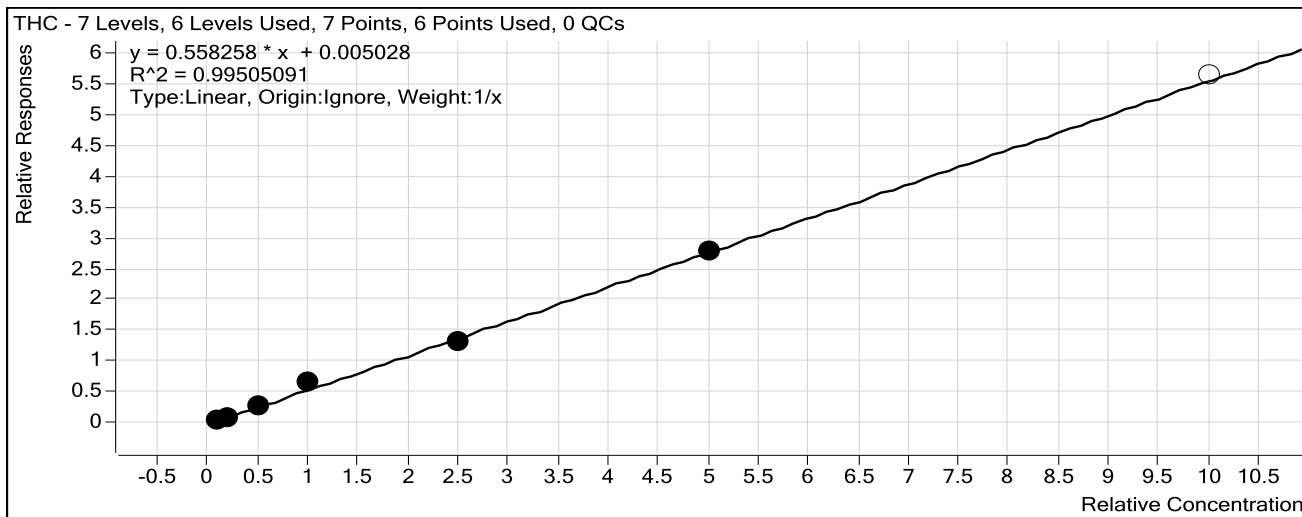
ISP Forensics Calibration Curve Report

CS

Batch Data Path C:\MassHunter\Data\2016\CANN\111716 CANN CS\QuantResults\11-17-2016
Cannabinoids.batch.bin

Last Calib Update 11/21/2016 3:04 PM **Analyst Name** ISP TOX

Target Compound *THC*
Internal Standard *THC-d3*



Sample	Level	Enabled	Exp Conc	Final Conc	Accuracy
Blood: 1_5 ng/mL	1	<input checked="" type="checkbox"/>	1	1.0	102.4
Blood: 2_10 ng/mL	2	<input checked="" type="checkbox"/>	2	1.7	83.5
Blood: 5_25 ng/mL	3	<input checked="" type="checkbox"/>	5	5.2	103.8
Blood: 10_50 ng/mL	4	<input checked="" type="checkbox"/>	10	11.6	115.6
Blood: 25_125 ng/mL	5	<input checked="" type="checkbox"/>	25	23.8	95.1
Blood: 50_250 ng/mL	6	<input checked="" type="checkbox"/>	50	49.8	99.5
Blood: 100_500 ng/mL	7	<input type="checkbox"/>	100	100.9	100.9

CS

ISP FORENSICS

Pocatello

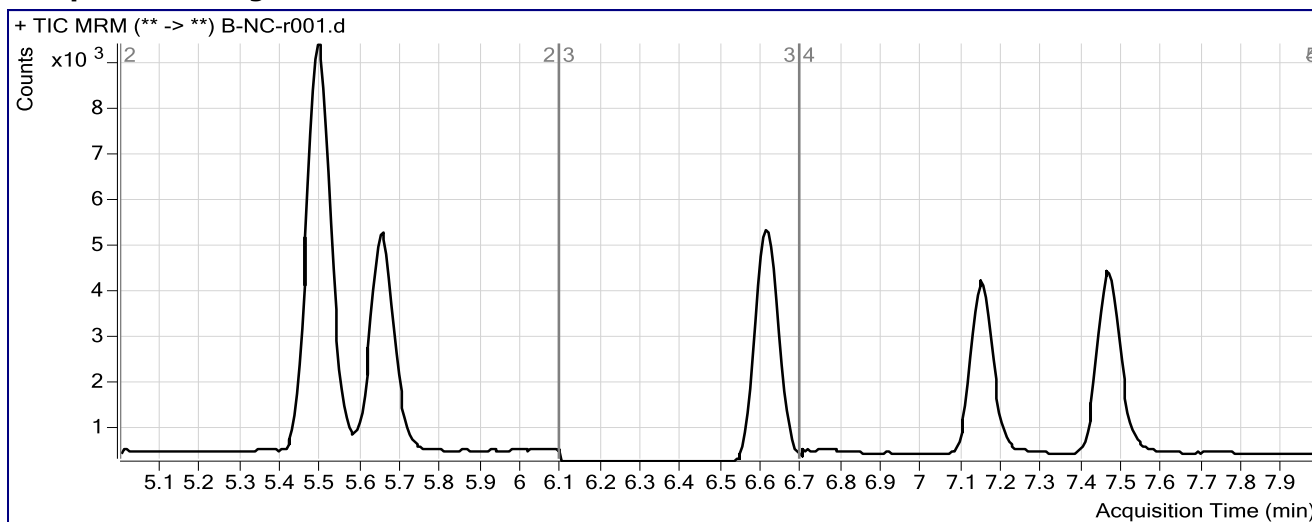
Cannabinoid Analysis Report

Batch Data Path	C:\MassHunter\Data\2016\CANN\111716 CANN CS\QuantResults\11-17-2016 Cannabinoids.batch.		
Analysis Time	11/21/2016 3:04 PM	Analyst Name	ISPUser
Report Time	11/22/2016 1:33 PM	Reporter Name	ISPUser
Last Calib Update	11/21/2016 3:04 PM	Batch State	Processed

Analysis Info

Acq Time	2016-11-17 18:21	Data File	B-NC-r001.d
Sample Type	Sample	Sample Name	Blood Negative Control
Dilution	1	Acq Method	isp blood cannabinoids Poky 2016-2.m
Position	P2-A9	Sample Info	Negative Blood UTAK Lot B1013
Inj Vol	-1	Comment	AM 6.1.2 Cannabinoids by LCQQQ

Sample Chromatogram



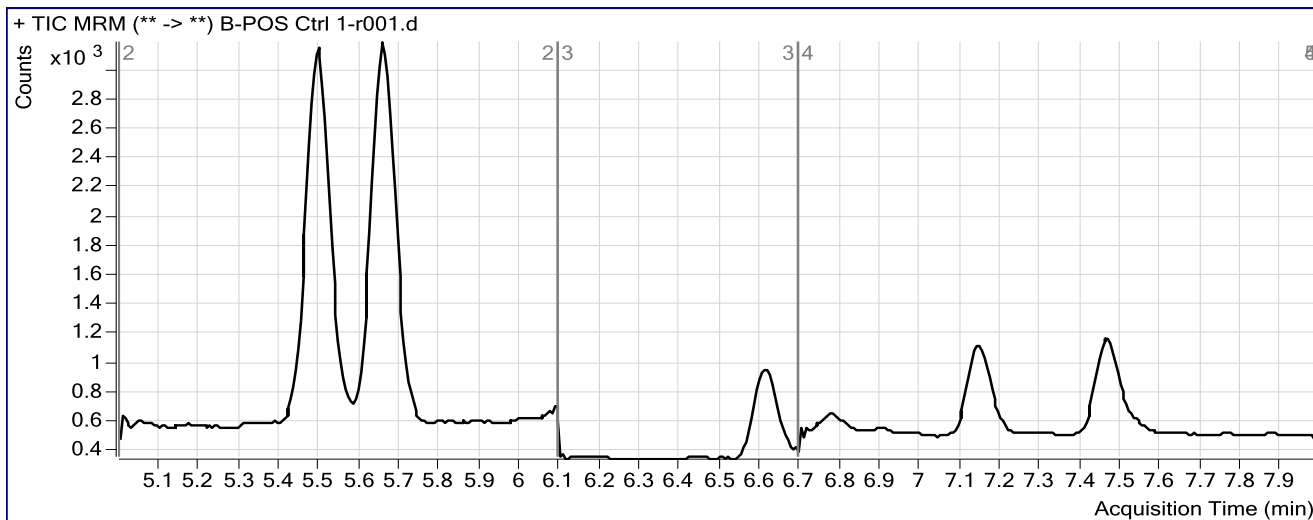
ISP FORENSICS Pocatello Cannabinoid Analysis Report

Batch Data Path C:\MassHunter\Data\2016\CANN\111716 CANN CS\QuantResults\11-17-2016 Cannabinoids.batch.bin
Analysis Time 11/21/2016 3:04 PM **Analyst Name** ISPUser
Report Time 11/22/2016 1:33 PM **Reporter Name** ISPUser
Last Calib Update 11/21/2016 3:04 PM **Batch State** Processed

Analysis Info

Acq Time 2016-11-17 18:34 **Data File** B-POS Ctrl 1-r001.d
Sample Type Sample **Sample Name** Blood PC 1
Dilution 1 **Acq Method** isp blood cannabinoids Poky 2016-2.m
Position P2-B1 **Sample Info** Positive Control- UTAK B1013 + WS060716
Inj Vol -1 **Comment** AM 6.1.2 Cannabinoids by LCQQQ

Sample Chromatogram



Results

Compound	ISTD Compound	RT	Response	ISTD Resp	Resp Ratio	Final Conc
Cannabinol	Cannabinol-d3	7.153	254	1759	0.1446	2.5929
THC	THC-d3	7.464	127	1017	0.1249	2.1469

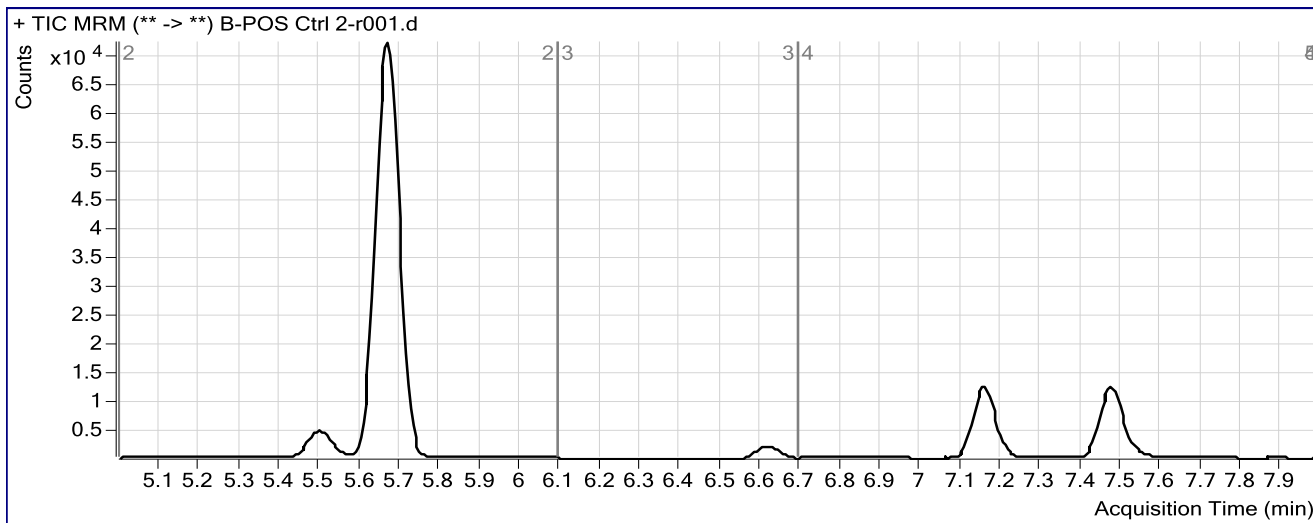
ISP FORENSICS Pocatello Cannabinoid Analysis Report

Batch Data Path C:\MassHunter\Data\2016\CANN\111716 CANN CS\QuantResults\11-17-2016 Cannabinoids.batch.bin
Analysis Time 11/21/2016 3:04 PM **Analyst Name** ISPUser
Report Time 11/22/2016 1:30 PM **Reporter Name** ISPUser
Last Calib Update 11/21/2016 3:04 PM **Batch State** Processed

Analysis Info

Acq Time 2016-11-18 02:55 **Data File** B-POS Ctrl 2-r001.d
Sample Type Sample **Sample Name** Blood PC 2
Dilution 1 **Acq Method** isp blood cannabinoids Poky 2016-2.m
Position P2-F6 **Sample Info** Positive Control- UTAK B1013 + WS060716
Inj Vol -1 **Comment** AM 6.1.2 Cannabinoids by LCQQQ

Sample Chromatogram



Results

Compound	ISTD Compound	RT	Response	ISTD Resp	Resp Ratio	Final Conc
THC-COOH	THC-COOH-d3	5.670	44808	4549	9.8504	278.0939
Cannabidiol	Cannabidiol-d3	6.609	68	3501	0.0196	0.4075
Cannabinol	Cannabinol-d3	7.158	29031	5150	5.6370	99.6919
THC	THC-d3	7.469	15995	3135	5.1026	91.3116